

Press release

Weigh In Motion and more – much more!

KiTrafic Plus from Kistler: the variable ecosystem for efficient traffic monitoring

Winterthur, March 2021

Weigh In Motion functionality tailored to each customer's specific requirements, extendable as desired by adding vehicle recognition and measurement systems: the Kistler Group's expertise in traffic data acquisition is packed into KiTrafic Plus – the new software-based modular system that helps to protect infrastructure, prevent accidents and automate traffic monitoring.

In the 21st century, automated Weigh In Motion (WIM) systems have evolved into a technology that plays a key part in monitoring ever-increasing traffic volumes and – especially – the loads and stresses to which roads are exposed. This is because overloaded commercial vehicles contribute disproportionately to wear and tear on infrastructure, and they also heighten the risk of accidents.

Now, Kistler offers its worldwide customers the new KiTrafic Plus: a flexible modular solution that can be precisely tailored to each user's needs – for applications ranging from vehicle preselection and bridge protection to direct prosecution of violations. As well as providing a wide choice of options for WIM, KiTrafic Plus can be extended flexibly by adding functions such as vehicle identification or recording of speeds and vehicle dimensions.

Open software-based platform

The core components of KiTrafic Plus: piezoelectric Lineas quartz sensors from Kistler that capture the weight of trucks at speeds of up to 120 km/h with high accuracy. Depending on their individual requirements, customers can choose from the Lineas, Lineas Compact and Lineas Digital models. As an option, detection of tire configurations and conditions (single/double and flat tires) can also be integrated into KiTrafic Plus.

A new feature of the KiTrafic Plus platform solution is the openness principle: alongside the advanced WIM functions, additional field devices can be integrated to ensure fully comprehensive traffic monitoring. Examples include ANPR and overview cameras, speed monitoring, dimension scanners and height detectors – the types and numbers of connected devices are fully variable according to choice. Thanks to the system's modular architecture, KiTrafic Plus can be extended at any later time, with no need for major outlay or effort. The Kistler DataMatcher software compiles all the data

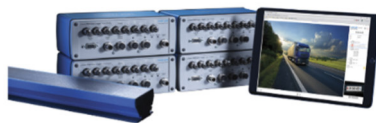
collected by the installed system to create a vehicle-specific dataset. This real-time process takes place in the control cabinet at the side of the road, close to the operating location. Then, the dataset is processed according to customer specifications before it is transmitted to higher-level systems via a machine interface.

The standard options for KiTraffic Plus include these modules, which can be combined as desired:

- WIM system based on piezoelectric quartz sensors to capture axle load, overall weight and vehicle class
- Integrated speed measurement
- Camera with ANPR capability for vehicle photos and numberplate recognition
- LIDAR dimension scanner to capture a vehicle's width, length and height
- Kistler DataMatcher software to acquire and synchronize data from the field devices

As an optional addition, Kistler offers a graphic user interface for live display of preselection data during spot-check campaigns, or for post-processing of the acquired datasets in the office. To ensure maximum reliability and protection of customers' investments, Kistler offers a wide-ranging package of services for Weigh In Motion: everything is covered, from precise analysis of the physical condition of the location and road before installation, comprehensive project management and support with system integration and calibration, through to staff training and warranty extensions.

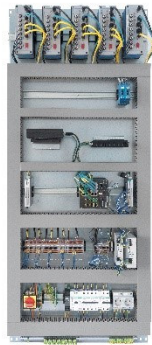
Image material (please name the Kistler Group as picture source)



Weigh In Motion – and more: piezoelectric Lineas quartz sensors are the core components of the modular KiTraffic Plus system.



Featuring a large overview screen and intuitive operation, the Kistler Checkpoint software enables users to preselect vehicles efficiently in real time – on the basis of facts.



The modular KiTraffic Plus system: ready pre-wired on a back panel for easy integration into existing or new control cabinets.

Media contact

Suzanne Graeser Bieri
Head of Marketing
Tel.: +41 52 2241 469
Email: suzanne.graeser-bieri@kistler.com

About the Kistler Group

Kistler is the global market leader for dynamic pressure, force, torque and acceleration measurement technology. Cutting-edge technologies provide the basis for Kistler's modular solutions. Customers in industry and scientific research benefit from Kistler's experience as a development partner, enabling them to optimize their products and processes so as to secure sustainable competitive edge. Unique sensor technology from this owner-managed Swiss corporation helps to shape future innovations not only in automotive development and industrial automation but also in many newly emerging sectors. Drawing on our extensive application expertise, and always with an absolute commitment to quality, Kistler plays a key part in the ongoing development of the latest megatrends. The focus is on issues such as electrified drive technology, autonomous driving, emission reduction and Industry 4.0. Some 2,050 employees at more than 60 facilities across the globe are dedicated to the development of new solutions, and they offer application-specific services at the local level. Ever since it was founded in 1959, the Kistler Group has grown hand-in-hand with its customers and in 2020, it posted sales of CHF 361 million. About 9% of this figure is reinvested in research and technology – with the aim of delivering better results for every customer.