

## Press Release

**Intertraffic Amsterdam 2018:**

### **Kistler presents complete Weigh In Motion solutions and services**

**Winterthur, 16 February 2018 – At this year's Intertraffic in Amsterdam (20-23 March 2018), the Kistler Group is showcasing its comprehensive KiTraffic Weigh In Motion (WIM) solutions, which support road owners and authorities in road and traffic monitoring, weight enforcement and weight-based tolling. The extended service package facilitates a wide range of applications and ensures high performance throughout the system's lifecycle.**

Increasing traffic and heavy-load vehicles put a strain on roads and infrastructure the world over. Damage to driving surfaces increases exponentially with higher axle loads, which means road owners and operators need to monitor usage carefully. Kistler's advanced and durable [WIM solutions](#) automatically gather traffic and load data without intervening in traffic flow. This provides a reliable basis for weight enforcement for overloaded vehicles, the calculation of toll fees, and the determination of maintenance intervals. The Swiss measuring specialists now additionally offer tailor-made WIM services, such as road analysis and calibration service.

#### **Comprehensive WIM solutions – from a single supplier**

KiTraffic Plus is a new WIM solution for automated road monitoring. Applications include weight enforcement and toll-by-weight. With its Lineas quartz sensors, KiTraffic Plus can measure vehicle loads at different speeds and on a virtually infinite number of lanes. The open and scalable system now operates using two to eight sensors per lane. KiTraffic Plus is a flexible and expandable solution, which can be combined with camera systems for vehicle identification, among other applications. The data is processed in a protected roadside cabinet. The results and analyses are available in real-time via web-based HMI or API interface transfers.

#### **The world's first WIM system based on subsurface quartz sensors**

KiTraffic Statistics is a compact, cost-efficient WIM solution, which incorporates newly developed sensors and pre-wired components for a quick and easy installation. Its new Lineas Compact quartz sensors are integrated into the road itself, 25 mm below the surface, and are covered with a grouting compound, which ensures an extended sensor lifetime while providing accurate data for Traffic Data Collection. KiTraffic Statistics offers the same benefits as KiTraffic Plus – robustness and flexibility – at a limited scope of functionality. It is ideal for customers who simply want an overview of road usage. The system offers reliable Weigh In Motion features at a great value for money.

#### **New advisory services extend customer support**

The Kistler Group now also offers two new advisory services for WIM applications. Prior to implementing a new WIM system, Kistler's road analysis helps determine the ideal position for the sensors, which is key since the reliability of measurements and the sensors' lifespan depend on the road quality. This process also helps estimate measurement accuracy. Furthermore, calibration service from experienced Kistler engineers is available remotely (via web or phone) as well as on-site, ensuring accurate measurements throughout the WIM system's lifecycle.

The Kistler Group looks forward to welcoming you for a live demonstration of the enhanced KiTraffic WIM solutions and services during Intertraffic Amsterdam 2018 (Hall 10, Booth 315). In addition to

its WIM solutions, Kistler now offers a broad portfolio of speed enforcement sensors and systems for static and mobile use.

Please find further information here: [www.kistler.com/wim](http://www.kistler.com/wim)

#### Disclaimer

Kistler, Lineas and various logos of Kistler and views of Lineas are registered trademarks and designs of the Kistler Group.

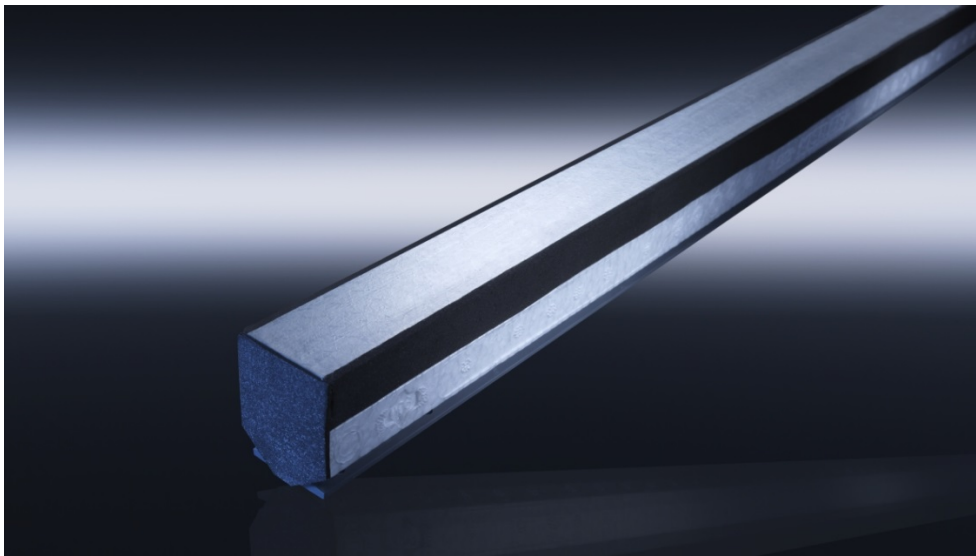


Image 1: Lineas subsurface quartz sensor of Kistler as robust and accurate solution for Weigh In Motion applications.



Image 2: Kistler's new WIM solution KiTraffic Plus can measure vehicle loads at different speeds and on a virtually infinite number of lanes.

## About the Kistler Group

Kistler is the global leader in dynamic measurement technology for measuring pressure, force, torque and acceleration. Cutting-edge technologies provide the basis for Kistler's modular solutions.

Customers in industry and science benefit from Kistler's experience as a development partner, enabling them to optimize their products and processes so as to secure a sustainable competitive edge. The owner-managed Swiss company's unique sensor technology plays a key role in the evolution of automobile development and industrial automation, as well as in numerous emerging sectors. With a broad knowledge of applications and its absolute commitment to quality, Kistler is making an important contribution to the further development of current megatrends. This includes topics such as electrified drive technology, autonomous driving, emission reduction and Industry 4.0.

Some 1 860 employees at 61 locations worldwide are dedicated to developing new solutions and offer customized service for individual applications. Since its founding in 1959, the Kistler Group has grown along with its customers, generating sales of CHF 422 million in 2017. Approximately 8% of this went back into research and technology — and thus into achieving better results for all our customers.

### Media contact:

David Stucki  
Divisional Marketing Manager ST  
Phone: +41 52 2241 258  
Email: david.stucki@kistler.com