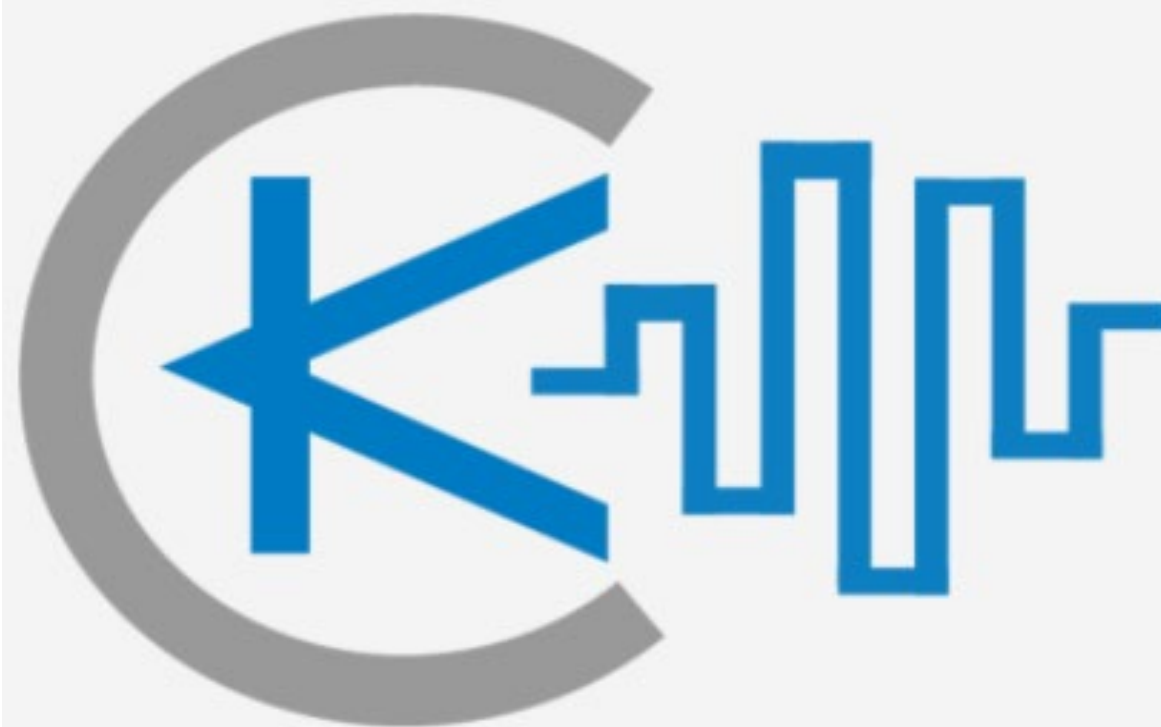

KiCenter 2.3.0

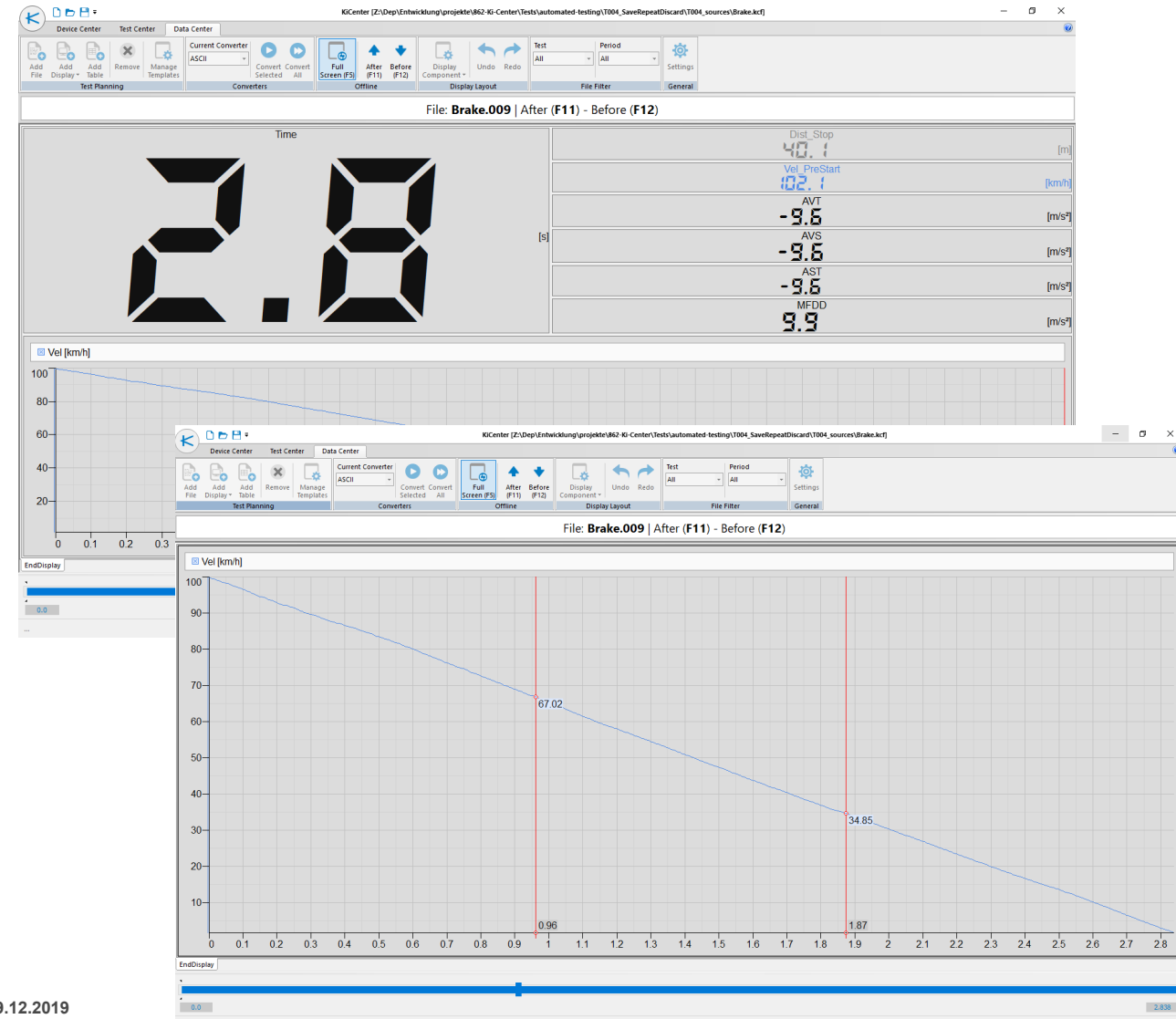
- New Features -



Data Center

For display and conversion of measurement data

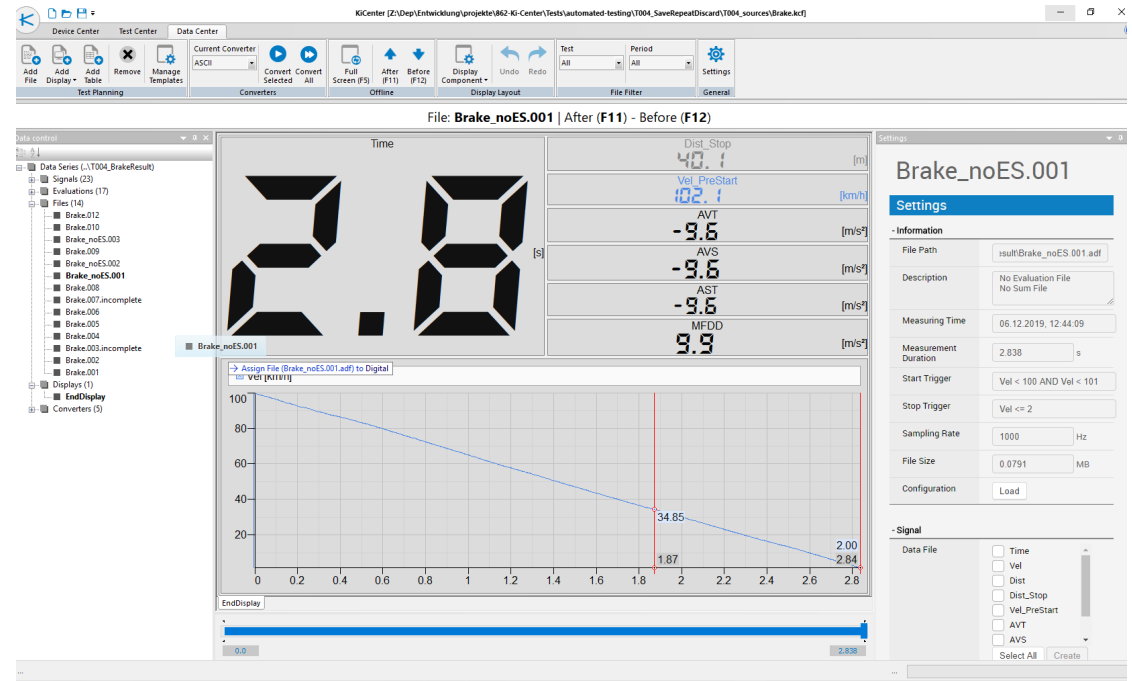
- Display of ADF files after measurement
- Plausibility check
- Creation of sum files from test series
- Creation of table files after measurement (if desired with changed trigger)
- Conversion to the following formats:
 - ASCII
 - RPCIII
 - MDF4
 - TDMs



Data Center

Operation

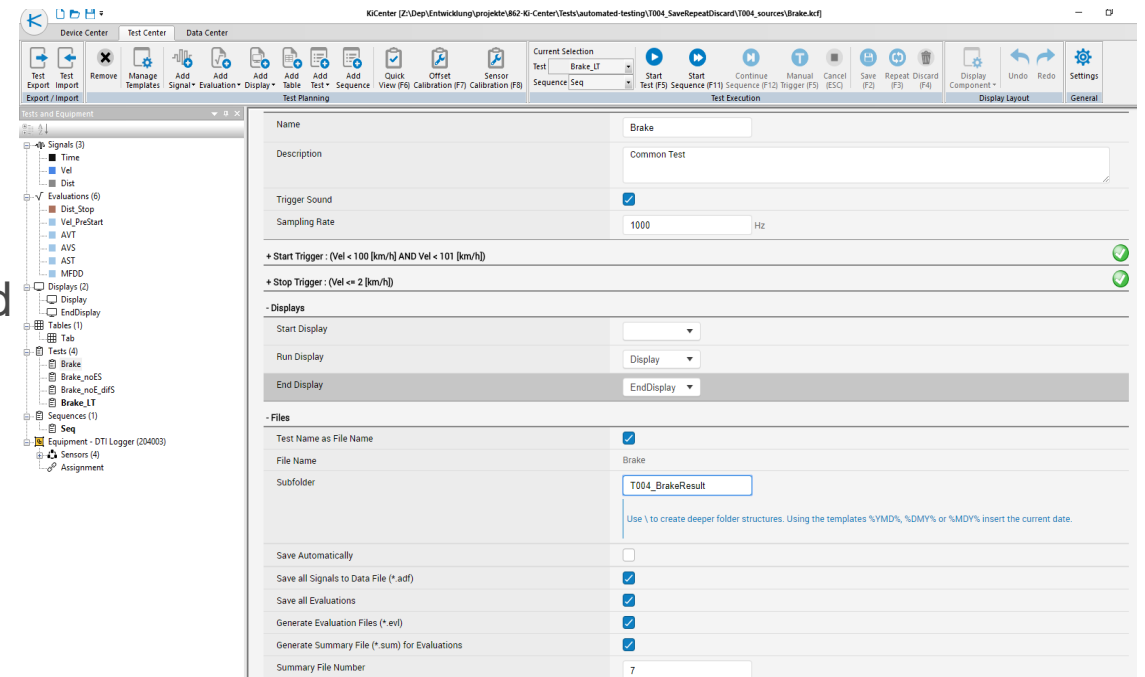
- Measured files are automatically added
- All files from the current test folder are automatically added
- Manual addition of files possible
- Automatic creation of end value display by drag and drop files into an empty display area
- Filtering of displayed files
- Opening the configuration from ADF possible



Test Center

Setting

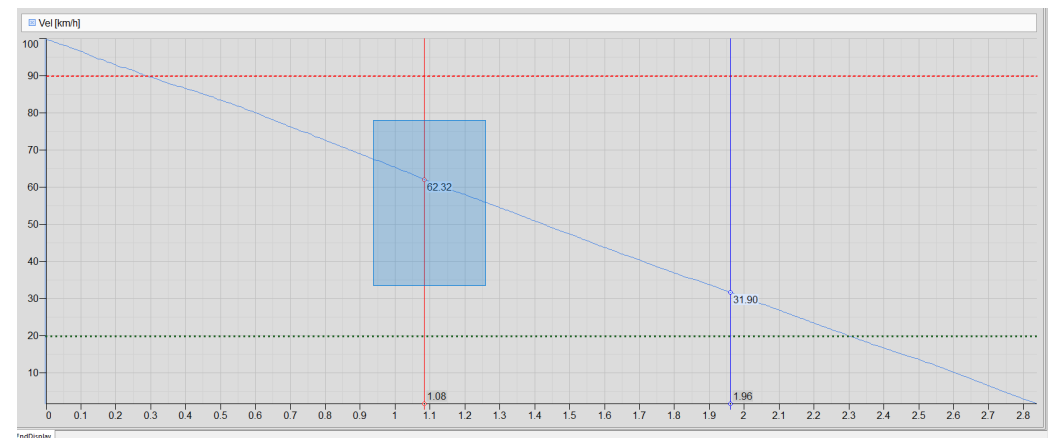
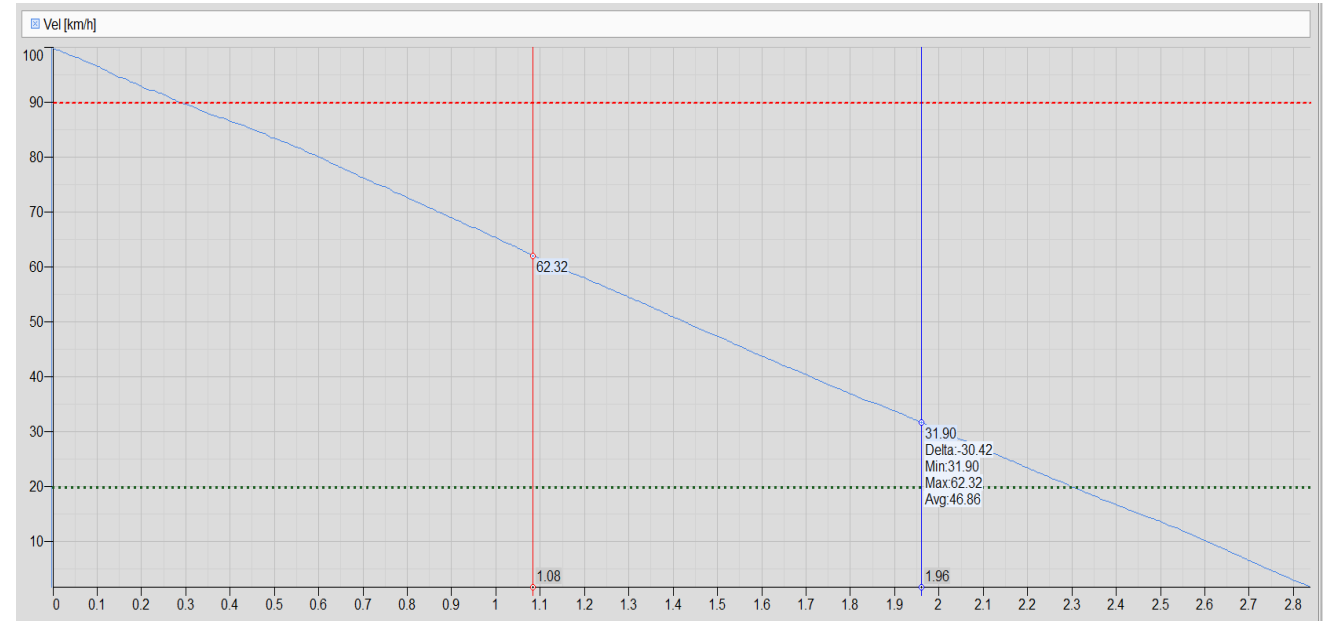
- Improved creation of subfolders
 - Date templates (e.g. %YMD% → YYYYMMDD)
 - Deeper subfolder structures possible
- Multiselection (signals and evaluations) now also possible in Tree
- Pre-/postfix to names can be added by multi-selection
- Changing tests by double-click on Test
- Status signals complemented
- Cancelled measurements (after start trigger) are still saved and complemented with a name affix (option)



Evaluation chart

After measurement and in Data Center

- Dashed cursor, if cursor is outside the range
Touch Mode for operating cursors via touch screen (right-click to enable)
- Statistic values (e.g. average) are displayed by moving mouse over the measured value
- More options for axes (e.g. same unit on one axis; also valid for Online Display)
- Cursor and zoom settings transferable to other charts
- Marker lines for visual control (also online)
- Manual zoom input possible
- Autozoom when double-clicking on axis



Removed features

Removed due to the reduction of the testing and maintenance effort

- Official support for Windows 7
 - KiCenter will continue to run on Windows 7, but no more tests will be performed
- Unit changeover in the main menu
 - The unit changeover had an effect on some configuration pages (e.g. optical sensors))
 - All units can still be used in the Test Center
- Changing the size of the page display