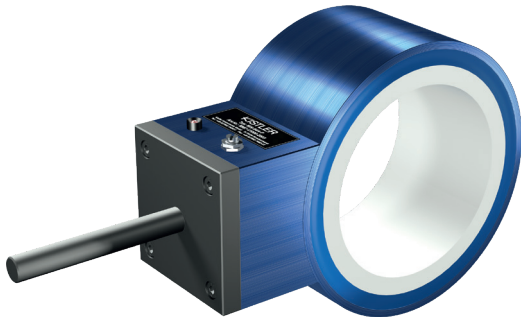


# IRS series

Inductive ring sensors – connector M12 – 4-pin



measure. analyze. innovate.



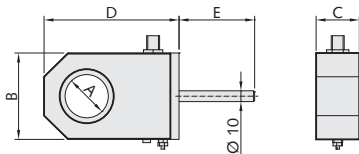
### Application

Ejection control in oil mist ambience  
Counting parts

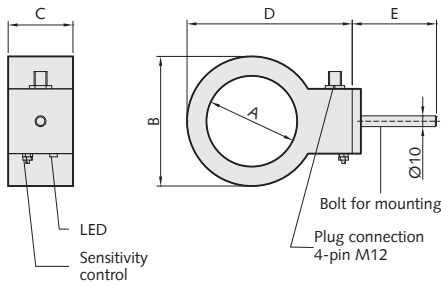
### Specifications

Circuit	Trigger electronics
Operating voltage	12 – 24 VDC
Current consumption	appr. 50 mA
Mode of operation	dynamic
Sensitivity	adjustable by 270° pot
Output with LED	PNP
Function	normally open
Load current	100 mA short-circuit proof
Frequency	max. 200 Hz
Temperature range	0°C – 55°C
EMC according to 2014/30/EU	EN 61000... CEE
System of protection	IP 60

IRS-40:



IRS-84 | IRS-155:



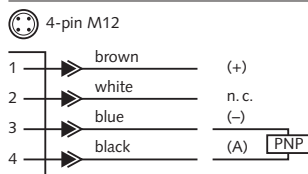
### Resolution

Diameter A* [mm]:	40	84	155
Part diameter [mm]:	1.5	3	6

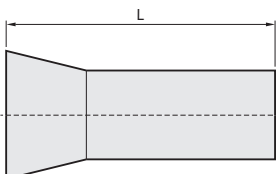
\*) A = Test diameter without protective tube

Dimensions [mm]	Ring sensor		
	IRS 40	IRS 84	IRS 155
A	40	84	155
B	80	120	200
C	40	60	60
D	125	157	237
E	70	70	90

### Pin configuration



Parts catcher and protective tube:



Dimension [mm]	Protective tube		
	ST 40	ST 84	ST 155
L	200	250	300

Article	Order No.
IRS-40/4-P	8907-41000-1003
IRS-84/4-P	8907-41000-2003
IRS-155/4-P	8907-41000-3003

**Accessories (more accessories, see last pages)**

Article	Order No.
ST 40 (Parts catcher and protective tube)	2305-28174-0010
ST 84 (Parts catcher and protective tube)	2305-28338-4010
ST 155 (Parts catcher and protective tube)	2305-28379-9010
Connection cable:	
VK-M12-5-g (5 m, straight)	2112-00005-0500
VK-M12-5-w (5 m, angled)	2112-00005-1500
Extension cable 4-pin M12:	
VK-M12-g/M12 (2 m, straight)	2112-00002-0404
VK-M12-g/M12 (5 m, straight)	2112-00005-0404