

jBEAM Basic/Professional T&M

Type 2897A...

Software for data analysis, visualization and report generation

jBEAM is a software for data analysis, visualization and report generation. With jBEAM measurement data analysis are made easy.

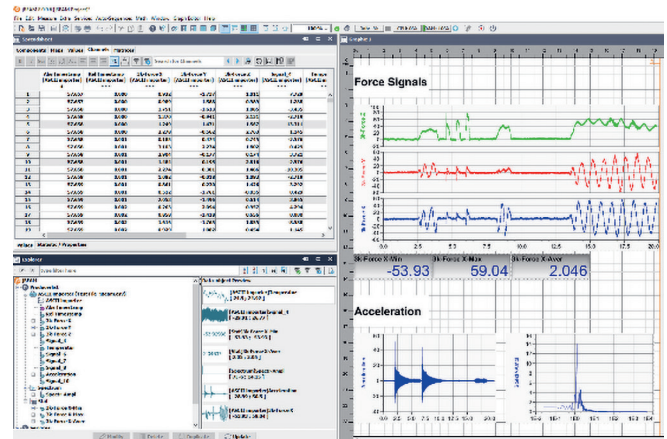
The benefits of jBEAM:

- Better and faster analysis of your data thanks to perfect presentation through extensive visualization tools
- Accomplish the required analysis quickly and efficiently with the interactive toolset
- Save time for creating reports with the automated reporting in different standard file formats

Description

jBEAM is a comprehensive post-processing software with extensive analysis functions and the capability of visualization and report generation. Due its platform independence and multilingualism, worldwide customers in R&D are using the software for quick analysis as well as for managing complex projects with terabytes of data.

jBEAM supports the import of multiple measurement file formats common in R&D and testing labs as well as multimedia formats to combine your measurement data with images, audio and videos. The extensive analysis functions range from simple arithmetic operations, curve analysis and FFT calculations to matrix operations, signal filters and statistics. Thanks to the comprehensive visualization functions, which range from simple text elements, forms and tables to all kind of 2D



and 3D graphs there is always a suitable format to display your measurement data and analysis results. In addition, the control elements allow you to create interactive visualizations and reports.

jBEAM is available in the editions "Basic T&M" and "Professional T&M". The edition "Basic T&M" is only available as part of the KiStudio Lab Starter Package (Type 2910A111). jBEAM Professional T&M is available either as part of the KiStudio Lab Professional Package (Type 2910A211) or as stand-alone post-processing software (Type 2897A2). For a comparison of the two available editions, please check the section "Technical Data".

2897A_003-476e-02.20

Technical data

		Basic T&M*	Professional T&M
Data import			
Data file	ASCII	✓	✓
	ASAM-MDF (v3/v4)	✓	✓
	jBEAM Project	✓	✓
	Catman (bin)		✓
	DIAdem (dat, tdm, tdms)		✓
	Microsoft Excel		✓
	FAMOS		✓
	HBM Perception (pnrf)		✓
	Hioki Hicorder (mem)		✓
	MATLAB		✓
	NetCDF		✓
	Racelogic VBox		✓
	RPCIII (MTS)		✓
	Universal File Format (15 & 58)		✓
	Yokogawa		✓
	Zwick		✓
Images	bmp, gif, jpeg, jpg, png, svg, wbmp	✓	✓
Audio	au, rmf, mid, wav, aif, aiff		✓
Video	avi, mpg, mov, mp4, m4v		✓
Data source manager			✓
Multi file importer			✓
File watcher			✓
ODBC database (browser & importer)			✓
Data export			
Data file	ASCII	✓	✓
	Microsoft Excel		✓
	GPS Exchange Format (GPX)		✓
	NetCDF		✓
Report	PDF document	✓	✓
	Microsoft Word document		✓
	Microsoft PowerPoint document		✓
	HTML file	✓	✓
	SVG file	✓	✓
	Screen video		✓
	jBEAM Graphic Element	✓	✓

2897A_003-476e-02.20

		Basic T&M*	Professional T&M	
Calculations				
Number of calculation instances		100	2 000	
Arithmetic	Formula editor for numeric objects		✓	
	Formula editor for numeric channels (line by line)	✓	✓	
	Formula editor with text resolver		✓	
	Integration & Differentiation	✓	✓	
	Bit arithmetic	✓	✓	
	Coordinate transformation	✓	✓	
	Pythagoras	✓	✓	
	X-values	✓	✓	
	Inline Java function		✓	
	Inline Java class		✓	
	Curve calculations	LMS fitting		✓
		Resolve Newton formula		✓
Signal calibration			✓	
Partial curve		✓	✓	
Curve split into matrix			✓	
Date split channel into matrix			✓	
Envelope curve			✓	
Memory			✓	
Resampling			✓	
Synchronize via time channel (date/time)			✓	
Move tests			✓	
Resampling angle-based			✓	
Synchronize hysteresis			✓	
Integration of hysteresis			✓	
Sort channels			✓	
X-data change			✓	
Complex channel extractor		✓	✓	
Curve analysis		Plausibility of channels	✓	✓
		Peak detection		✓
		Peak area detection		✓
	Step response		✓	
	Correlation of 2 curves		✓	
	Plateau analysis		✓	
	Compression work		✓	
Vibration analysis (FFT)	FFT spectrum	✓	✓	
	Effective value		✓	
Signal filters	FFT bandpass		✓	
	Editable filter		✓	
	CFC filter		✓	
	Moving average	✓	✓	

2897A_003-476e-02.20

		Basic T&M*	Professional T&M
Data filters	Matrix columns filter/sorter		✓
	Value filter		✓
Statistics	Extract statistical values	✓	✓
	Append values (statistical or formula)	✓	✓
	Extract values by index	✓	✓
	Append values (input values)	✓	✓
	Statistics over channels	✓	✓
	Statistics over matrix columns		✓
	Box whisker statistics		✓
Counting procedures	Stat. frequency 1D	✓	✓
	Stat. frequency 2D		✓
	Reversal points		✓
Conversions	Concatenate values	✓	✓
	Concatenate channels	✓	✓
	Concatenate items of tests		✓
	Concatenate producers		✓
	Data objects switch		✓
	Grouping data objects	✓	✓
	Grouping of calculations/graphics		✓
	Component collection		✓
	Ungroup group of data objects	✓	✓
	Extract bits	✓	✓
	Cuts through matrix		✓
	Channel → Group of values		✓
	Channels → Matrix		✓
	Position vectors → Matrix		✓
	Matrix → Position vectors		✓
	Index for relative time		✓
	Abs. time → Rel. time	✓	✓
	YMDHMS → Date/Time	✓	✓
	Date/Time conversion		✓
	Key ↔ Label		✓
	String ↔ Numeric value		✓
	Video → Timed images		✓
	Property → Data item	✓	✓
Data item → Property	✓	✓	
List of properties	✓	✓	
Counter → Physical values	✓	✓	

		Basic T&M*	Professional T&M
Graphic functions			
Number of graphic object instances		100	1 000
Simple forms	Line	✓	✓
	Rectangle	✓	✓
	Circle	✓	✓
	Curved line	✓	✓
	Speechbox	✓	✓
	Tabbed graphic area		✓
	Text elements	Plain string	
	Plain text	✓	✓
	Formatted text		✓
	MathML graphic		✓
	HTML viewer		✓
	Variables as text	✓	✓
Tables	Table of content		✓
	Free table	✓	✓
	Interactive table		✓
	Item property table	✓	✓
	Legend		✓
	Spreadsheet	✓	✓
	Matrix table		✓
Graphics	Digital display	✓	✓
	Bar graph	✓	✓
	Needle indicator	✓	✓
	Boolean display	✓	✓
	Multi digital display		✓
	Dynamic images		✓
Graphs/Charts	Universal 2D chart	✓	✓
	- Line/Point diagram	✓	✓
	- Graph objects diagram	✓	✓
	- Scaled image	✓	✓
	- Bubble diagram	✓	✓
	- Moving sprite		✓
	- Box-Whisker diagram		✓
	- Vector field diagram		✓
	- Matrix diagram		✓
	- Isoline/Contour diagram		✓
	- Moving map		✓
	- Number of curves	10	20
	- Number of axes	2	5

2897A_003-476e-02.20

	Basic T&M*	Professional T&M
Universal 3D chart		✓
- 3D points diagram		✓
- 3D surface diagram		✓
- 3D waterfall diagram		✓
- 3D bar diagram		✓
- 4D surface diagram		✓
Line/points chart (polar)		✓
Radar graph		✓
Pie graph		✓
Graphic objects	✓	✓
Vector field		✓
Multimedia		
Dynamic images		✓
Image	✓	✓
Audio player		✓
Video player		✓
Control elements		
Interactive table		✓
Switch	✓	✓
Check box	✓	✓
Combo box	✓	✓
Data item selector	✓	✓
Radio buttons	✓	✓
Value input	✓	✓
Text input	✓	✓
Slider	✓	✓
Knob		✓
Button		✓
Multi button		✓
Command button		✓
Import controller		✓
Iterable graph input controller		✓
Time controller	✓	✓
Data item reference holder		✓
Property editor	✓	✓
Tabbed graphic area		✓
Command push button		✓

		Basic T&M*	Professional T&M
Miscellaneous			
Audio recorder			✓
Data generator	Actual time	✓	✓
	Time channel	✓	✓
	Numeric channel	✓	✓
	Signal generator	✓	✓
	Double matrix	✓	✓
	String channel	✓	✓
	Matrix with strings	✓	✓
	Properties map	✓	✓
	Grouped maps		✓
	Graphic objects	✓	✓
	Dialog configurator		✓
	Performance test	✓	✓
Open street map (OSM) integration		✓	✓
User interface and languages			
English		✓	✓
German		✓	✓
Chinese		✓	✓

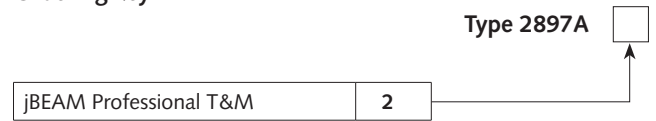
*The edition "Basic T&M" is part of the KiStudio Lab Starter Package Type 2910A111 and not available as stand-alone software.

System requirements and recommendations

The system requirements for jBEAM Basic/Professional T&M very much depend on your analysis needs. The following system configuration is recommended for a setup that covers most use cases:

Operating system	Windows 10
Processor	Intel Core i5-7500, 2.7 GHz or better (recommended)
Memory	4 GB (minimum)
Mass storage	SSD (recommended) 2 GB free disk space for installation (minimum)
Display resolution	1920 x 1080 / full HD (recommended)

Ordering key



The edition “Basic T&M” is part of the KiStudio Lab Starter Package Type 2910A111 and not available as stand-alone software.