

## testXpert software

### The all-in-one software solution

This freely configurable Windows software used by Kistler carries out all the tasks required before, during and after performance of the tests needed for standard-compliant and documented testing.

- Tests are compliant with all known standards for bolted joints
- Test sequences and procedures are specified on the basis of the block structure
- Data is conveniently organized and documented
- Extensive graphic analysis of measurement profiles
- Varied options for inspection reports and layouts

#### Description

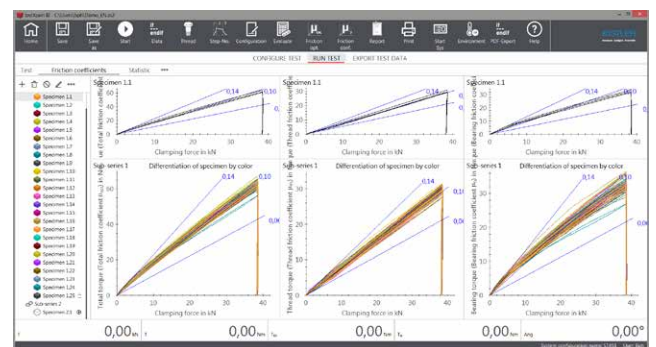
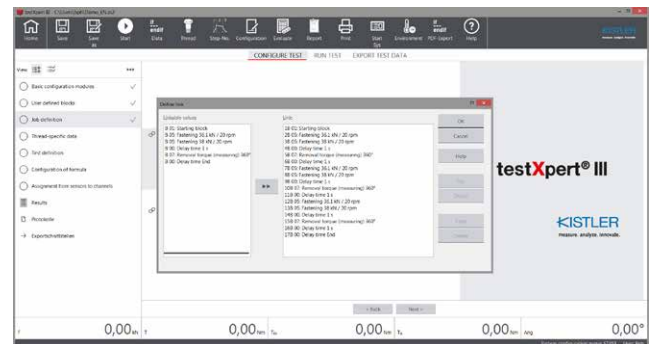
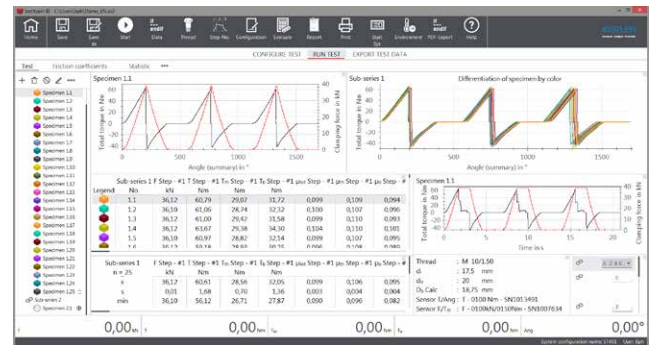
The testXpert software is a reliable platform with simple, intuitive operation and complex functionalities covering the complete range of testing for bolted joints.

Thanks to the block-based structure of the test sequences, users can freely define the sequences they require according to their own specifications and requirements, either to meet specific customer requirements or to comply with standards. Each individual block can be freely configured as regards starting value, switch-off value and specified speed. It is even possible to select multiple switch-off values, for integrating safety functions, for example. If the integrated repeat meter is used, this means that multiple tightening operations can be implemented and the test can be cancelled when a safety value is exceeded. The software is not tied to predetermined test program structures.

An input wizard makes it easy to select and enter all the key data required for testing. These include the test sequence, thread data, calculation formulas specified by various standards for coefficients of friction and bearing surface diameters, sensors to be used, descriptive parameters and results. For this purpose, the sensor and thread data are stored in a global database system with traceable documentation.

Based on the test sequence, the operator can view a tabular display of multiple results from the measurement data memory for each block, and the results can then be evaluated statistically. For complex evaluations such as those required for certain standards, the software provides predefined results. Another possibility is to set up freely programmable results according to your own preferences.

During and after the test, the measurement curves are shown in freely configurable graphs.



testXpert\_003-439e-06.19

As an additional option for advanced evaluations, a video can be recorded and stored during the fastening process; later on, it can be evaluated with the rest of the data.

In order to generate test reports, all the results, tables, graphics and user-defined parameters can be integrated into any test report form specified by the customer, with the help of a wizard; this data can be outputted as a test report (via the integrated export interface, for example) or automatically transferred to higher-level software platforms.

**Application**

The testXpert software is used in conjunction with the measurement and control unit 5413-2777/XE.. for quality monitoring of releasable fasteners.

**testXpert requirements**

**Current hardware requirements (minimum system recommendation)**

- Intel Core-I5
- 4 GB RAM
- 500 GB S-ATA hard disk
- Screen resolution min. 1 280 x 1 024 pixels and 65k colors (high color)
- DVD disk drive (for installation)
- 1 free USB 2.0 port (BUS-powered)

**Operating system**

- Microsoft Windows XP, SP3  
(no longer supported as of testXpert II V3.7)
- Microsoft Windows Vista™
- Microsoft Windows 7 (as of testXpert II V3.5)
- Microsoft Windows 8 (as of testXpert II V3.61)
- Microsoft Windows 8.1 (as of testXpert II V3.61)
- Microsoft Windows 10 (as of testXpert II V3.7)

**Language packages**

- German
- English
- Chinese (simplified), optional\*
- French, optional\*
- Italian, optional\*
- Japanese, optional\*
- Polish, optional\*
- Spanish, optional\*
- Turkish, optional\*

\* Functional scope of language packages and testXpert version requirements differ

**Ordering key**

Type testXpert

**Version**

testXpert II V3.2	2320
testXpert II V3.3	2330
testXpert II V3.5	2350
testXpert II V3.6.1	2361
testXpert II V3.7.1	2371
testXpert III V1.2	3120

**Plug-in 1**

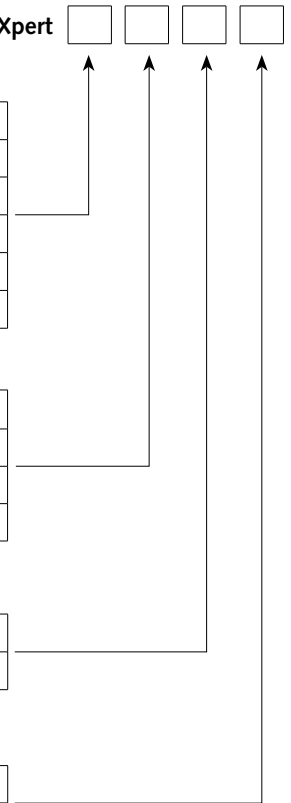
ANALYSIS (451.00)	AN
BASIC (451.01)	BA
AUDIT (451.00)	CO
INSPECT (452.00)	IN

**Plug-in 2**

None	00
INSPECT (452.00)	IN

**Additional plug-in**

None	00
Video capture	VI



Windows is a registered trademark of Microsoft Corporation.  
testXpert is a registered trademark of Zwick GmbH & Co. KG, Ulm, Germany.

testXpert\_003-439e-06.19