

# Direct Cavity Pressure Measurement – Installation- Compatible Sensors

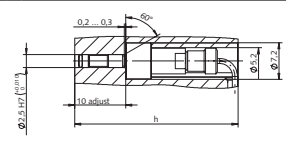
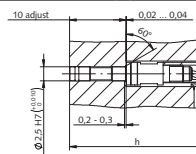
## Summary table $\varnothing 2,5$ mm

Front diameter	2,5 mm	2,5 mm	2,5 mm
Measured variables (p: pressure; T: temperature)	p	p	p
Technical Data	Type	6182C... <sup>1)</sup>	6178A... <sup>1)</sup>

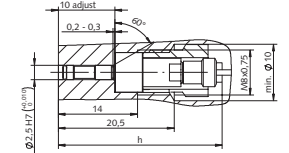
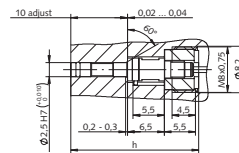


### Installation sketch

Installation with spacer sleeve



Installation with mounting nut



h = minimum installation height, see table

### Measuring range

Temperature	°C	–	–	–
Pressure	bar	0 ... 2000	0 ... 200	0 ... 2000
Sensitivity	pC/bar	≈–2,5	≈–12	≈–2,5

### Sensor front

Machinable		•	•	•
Option: Abrasion protection (not machinable)		•	–	•

### Cable technology

Single-wire, with/without connector <sup>2)</sup>		•	•	•
Single-wire, with crimp contact <sup>3)</sup>		•	•	•
Coaxial, with standard 4)/customer specific cable length <sup>5)</sup>		–	–	•
Conductive spacer sleeve		•	–	–
Compensating cable with standard <sup>6)/</sup> customer specific cable length <sup>7)</sup>		–	–	•
Exchangeable cable		•	–	•

### Operating temperature

Melt temperature	°C	<450	<450	<450
Mold temperature	°C	<200	<200	<200

### Applications + characteristics

Thermoplastics small front diameter waterproof (IP67)	Foam injection molding Compression molding Thermoplastics high sensitivity	Thermoplastics small front diameter
---	---	--

### Accessories

Spacer sleeve	Type	6464A1 <sup>8)</sup>	6464A1 <sup>8)</sup>	6459
Minimum installation height	mm	24	21	32
Mounting nut	Type	6460A1	6460A1	6457 <sup>8)</sup>
Minimum installation height	mm	22,5	22,5	29
Data sheet, see <a href="http://www.kistler.com">www.kistler.com</a>		6182C (003-110)	6178A (000-514)	6159A (000-032)

• Variant available – Variant not available <sup>1)</sup> Standard product <sup>2)</sup> Cable can be shortened by user, standard length 1.5/5 m  
<sup>3)</sup> Connection to contact element 1712/1714A, Customer-specific length (l<sub>min</sub> = 0.1 m/l<sub>max</sub> = 1.5 m) <sup>4)</sup> l=0.2/0.4/0.6/0.8 m  
<sup>5)</sup> Customer-specific length (l<sub>min</sub> = 0.1 m/l<sub>max</sub> = 5 m) <sup>6)</sup> l=0.4/0.8/1.2/1.6/2 m <sup>7)</sup> Customer-specific length (l<sub>min</sub> = 0.15 m/l<sub>max</sub> = 5 m) <sup>8)</sup> Delivered accessories