

# TraceControl

Type 4735A

## Software for Force/Displacement Measurement Units

TraceControl Type 4735A is an easy-to-use software that connects the force/displacement measurement units Type 4733A... Model DMF-P A400 advanced and Type 4734A... Model DMF-P A300 NCF with the PC and is distinguished by the following features:

- Simple, intuitive operation
- Configuration and control of the instrument via Ethernet
- Remote control of the instrument from the PC screen (1:1 representation)
- Convenient graphic functions
- Support for system setup, production and quality assurance

### Description

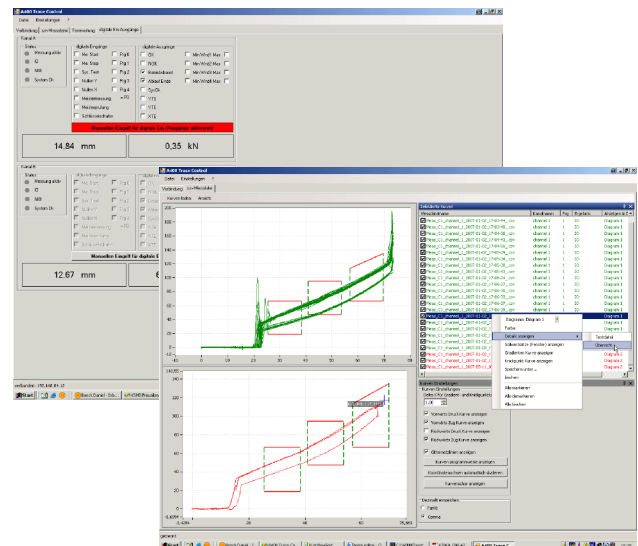
The TraceControl PC software gives the user the possibility to search for instruments in the local network. This can establish a connection to the instruments and display the current screen content on the PC with the remote control function. A graphic visualization of the measurement graphs, taken from saved files or transferred directly from the instrument, enable later process control.

Parameterized target value windows (evaluation ranges) and a complete array of curves can be easily exported to image files where the jpg, bmp, png and gif formats are supported. There is also an option to add comments to measurement graph ranges of interest.

### Application

In the system setup of a force/displacement measurement system, the TraceControl PC software can be used to superimpose various measurement graphs in order to facilitate optimum positioning of the target value windows. It is possible to read out all digital inputs and outputs of the equipment controller or to set them by mouse click. This means the digital activation can be simulated by the PLC from the PC.

Additional monitoring of the measurement process by any PC in the network is possible during production. For quality assurance, the NIO measurement graphs can be quickly filtered and an efficient examination of any failures carried out.



### Menu Guidance

The force/displacement measurement unit can be fully remotely controlled. All front panel keys can be controlled by PC keyboard or mouse click. The display content shows a 1:1 representation of the actual instrument.

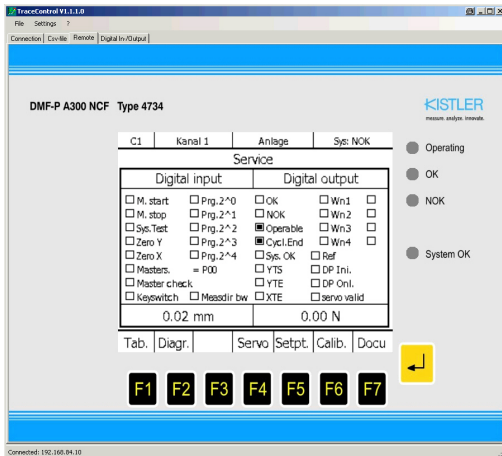


Fig. 1: Virtual instrument front panel

All digital inputs and outputs of the equipment controller can be read out or be set by mouse click.

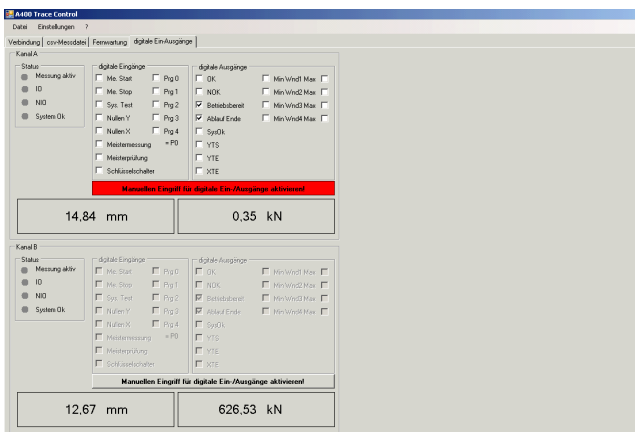


Fig. 2: Digital in-/outputs

Complete arrays of curves can be easily exported to image files where the jpg, bmp, png and gif formats are supported. Optionally comments may be added to measurement graph ranges of interest.

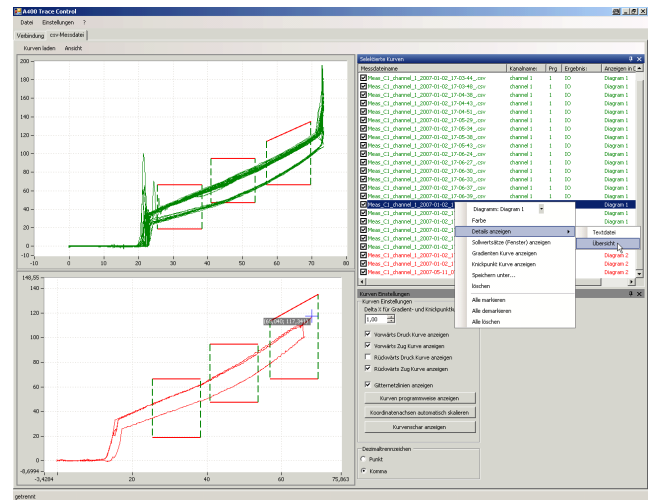


Fig. 3: Set of curves

### PC requirements

- Operating systems: Windows® 2000, XP with .Net 2.0
- Pentium PC 1 GHz or higher
- 10 MB of free hard disk space for the software installation
- At least 128 MB RAM
- Ethernet interface
- SVGA monitor, resolution of 800x600 or higher
- Microsoft-compatible mouse

### Supported Devices

Force/displacement measurement units

- Type 4733A... Model DMF-P A400 advanced
- Type 4734A... Model DMF-P A300 NCF

### Included Accessories

- None

### Ordering Code

TraceControl, Software  
for force/displacement measurement

**Type 4735A**

Windows® is a registered trade mark of Microsoft Corporation.