

ComoDataCenter 4

Type 2829D...

In everyday production, information is one of the most important ways of ensuring precision, zero defects, cost awareness, and quality management.

The ComoDataCenter 4 links all the user's ComoNeo and CoMo Injection systems, combining process- and quality-related production data for both live and completed orders in one database.

- Central data storage of all recorded process data
- Easy and fast search (filter option) for production orders
- Comparison of the production efficiency across several batches
- Fast detection of process fluctuations
- Recording and comparison of the utilization and efficiency of machines

Description

The ComoDataCenter 4 contains a database, where the data recorded by the ComoNeo and CoMo Injection system is stored. A convenient user interface allows the user to view this data and analyze it during ongoing production. The entire system uses the indicators: Production order, production batch, article number, and mould number. The data can be exported to other systems easily with just a few clicks. A standard database is included in the scope of delivery for storing data. The ComoDataCenter 4 can however also be incorporated in existing customer databases.



Fig. 1: ComoDataCenter 4 interface

Application

The ComoDataCenter 4 provides a practical way of gaining an overview of the production environment. The production manager can also quickly see what is happening in production, as can a shift supervisor starting his or her shift or a quality manager who wants to follow production of a key product. The system is designed to save information produced by the ComoNeo and CoMo Injection system, such as Good/Bad, Maximum/Minimum, Integral, and to clearly illustrate, evaluate, and if required prepare this for data export for the user.

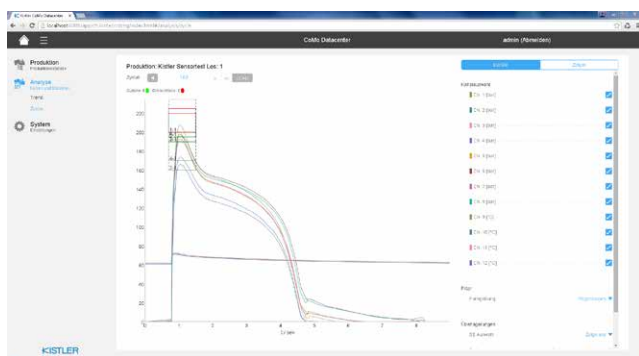


Fig. 2: ComoDataCenter 4 Cycle View

Technical data

Data volume

2.5 GB per channel for 1,000,000 cycles

2829D_003-175e-01.19

Software components

Production networking and analysis

- Machine performance over the last 24 hours
- Machine utilization and scrap rate

Process analysis

- Curve analysis
- Trend analysis
- Reporting function
- Statistics
- Good/Bad Analysis

Moldmanagement

- Mutual mold conversion of CoMo Injection and ComoNeo
- Referenzzyycle management

Supported systems

ComoNeo

CoMo Injection

Supported operating systems

Windows 2012/Windows 2016

Windows 7 (32 bit, 64 bit)

Windows 8/Windows 10

Supported database servers

mySQL (standard)

Supported browsers

Chrome (recommended)

Internet Explorer (version 11 and higher)

Other software system requirements

.net Framework 4.0

Minimum hardware requirements for up to 10 Systems*

4-core processor

8 GB RAM

250 GB hard disk

Screen resolution 1024x768 (minimum)

* For bigger applications there are different requirements. Please contact Kistler for detailed information

Minimum requirement of virtual servers

Data transfer rate (reading & writing) of 50 MB/s

Network bandwidth

approx. 1 MB per cycle, per device

Ordering key

Type 2829D

ComoDataCenter 4 software	00
ComoDataCenter 4 single license for ComoNeo	01

Type 2829C

ComoDataCenter 4 – single license for CoMo Injection	01
ComoDataCenter 4 – 5 licenses for CoMo Injection	05
ComoDataCenter 4 – 10 licenses for CoMo Injection	10

1 CoMo Injection system can be connected per license. For ComoNeo the licence is activated directly on the unit itself. The licenses can be used both for new installations and as upgrades for existing installations.

2829D_003-175e-01.19

Windows, Windows 2012/2016, Windows 7, Windows 8 and Windows 10 are registered trademarks of Microsoft Corporation.