

## PFT Sensors

Type CPFTB

### Pedal Force Sensors

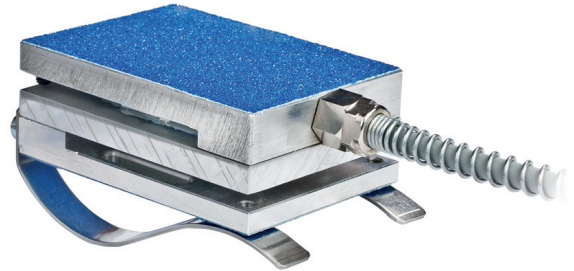
For measurement of force exerted on the brake pedal and hand-brake levers of motor vehicles during brake tests.

- Compact and robust
- Easy, quick, and secure mounting
- Exact measurement independent of the angle of activation
- Overload protection

#### Description

For use with brake test stands and for normal driving. Pedal force measurements are independent of the angle of the activation force. The sensors put out an analog signal according to the pedal force.

Type CPFTB is suited for use with passenger cars or trucks. Mounting is effected quickly and easily using a special clamp, either on the brake pedal or the hand brake lever.



#### Application

For determination of the forces exerted on the brake pedal or hand brake lever during brake tests.

#### Technical Data

##### Performance Specifications

Measurement range	N	0 ... 1 500
Overload	N	1 800
Measurement accuracy	%FSO	±0,5
Output range	V	0 ... 5

##### System Specifications

Power supply	V	11 ... 25
Operating temperature range	°C	-10 ... 50
Degree of protection		IP65
Dimensions	mm	50x70x27

CPFTB\_000-978-08.13

## Mounting



Fig 1: Sensor Type CPFTB mounted at the brake pedal



Fig. 2: Sensor Type CPFTB mounted at the hand brake lever of a car

## Included Accessories

- Calibration
- Multimedia CD incl. software & manuals
- Transport case PFT/HFT, complete

## Type/Art. No.

44000653  
55082182  
55123087

## Optional Accessories

- For example: cables

## Type/Art. No.

on request

## Ordering Code

- Pedal force sensor with integrated electronics, incl. signal cable

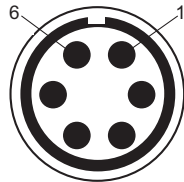
**Type CPFTB**

Other types on request

## Pin Assignments

### 6 pin LEMO Connector

Pin	Signal
1	n.c.
2	+12 V
3	GND
4	n.c.
5	Signal
6	GND



Type: 6 pin LEMO  
View: Male insert of cable connector

### Open End

Color	Signal
Brown	+12 V
Green	Signal
White	GND
Yellow	n.c.