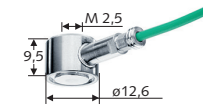
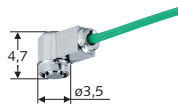


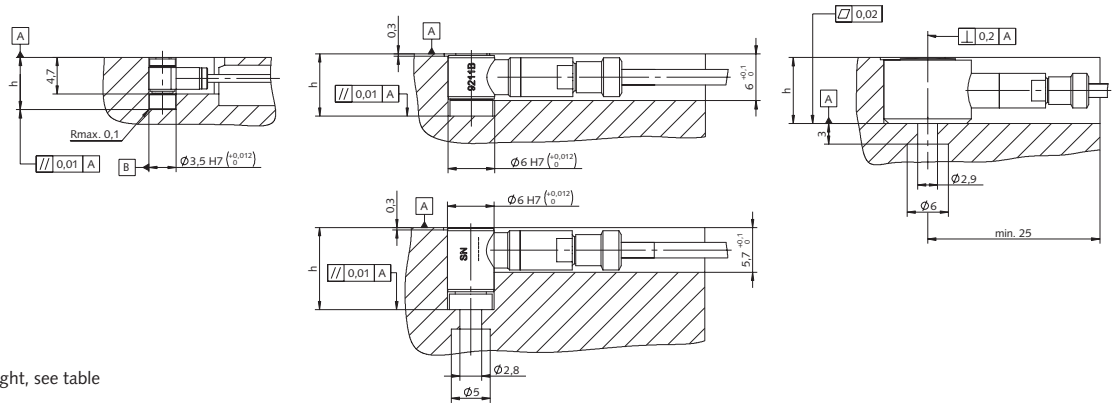
Indirect Cavity Pressure Measurement

Summary table indirect Sensors

Front diameter	3,5 mm		6 mm		12,6 mm
Technical Data	Type	9210A... ¹⁾	9211B... ¹⁾	9213B...	9204B... ¹⁾



Installation sketch



h = minimum installation height, see table

Measuring range

Force ²⁾	kN	0 ... 0,25	0 ... 2,5	0 ... 2,5	0 ... 10
Overload	kN	0,3	3	3	12
Sensitivity	pC/N	≈-10	≈-4,4	≈-4,4	≈-1,6

Cable technology

Single-wire, with/without connector ³⁾		•	•	•	•
Coaxial		-	•	•	•
Exchangeable cable		-	•	•	•
Operating temperature range	°C	-40 ... 200	-40 ... 200	-40 ... 200	-40 ... 200

Applications + characteristics

all injection molding processes	all injection molding processes	all injection molding processes	all injection molding processes
smallest force sensor cable output at the side, especially for modularly designed molds	especially for multi-cavity molds	with M2.5 fastening thread especially for multi-cavity and small molds	with M2.5 fastening thread

Accessories

Thrust washer	Type	9406 ⁴⁾	9411 ⁴⁾	9413 ⁴⁾	-
---------------	------	--------------------	--------------------	--------------------	---

Important installation dimensions

Dimensions	mm	Ø3,5	Ø6	Ø6	Ø12,6
Construction height	mm	4,7	5,7	8,5	9,5
Minimum installation height	mm	6,7	7,7	10,5	9,6
Data sheet, see www.kistler.com		9210A (000-601)	9211B (000-555)	9213B (000-556)	9204B (000-128)

¹⁾ Standard product

²⁾ Conversion formula for pressure sensitivity: Pressure sensitivity [pC/bar] = nominal force sensitivity [pC/N], area of the ejector pin [mm²] x 0.1

³⁾ Cables can be shortened by the user, standard length 1.5/5m

⁴⁾ Delivered accessories

⁵⁾ Elongation is proportional to the cavity pressure