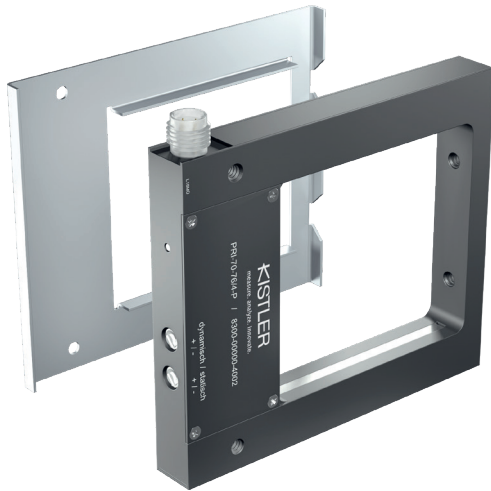


PRI 15 mm series

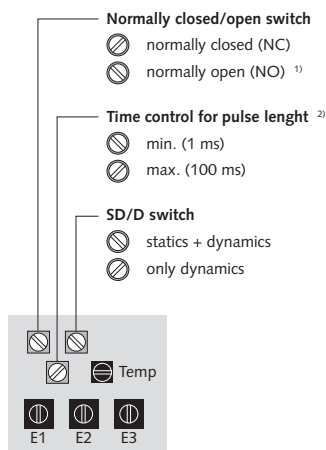
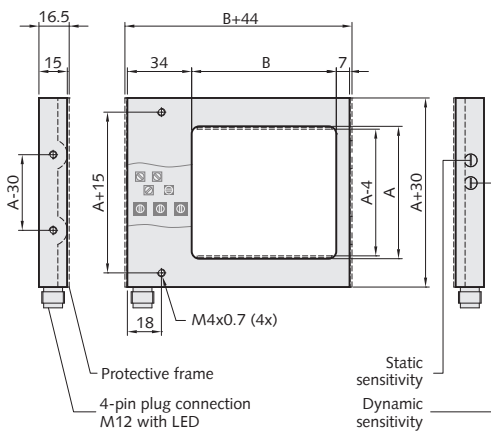
Multi-beam infrared frame light barriers with integrated amplifier – connector M12 – 4-pin



measure. analyze. innovate.



The protective frame is optionally available



■ Must not be changed!

- 1) Default setting
- 2) Default setting: 10 ms

A [mm]:	70	100	150
B [mm]:	76	96	150

Application

- Ejection control
- Counting of ultra small parts

Specifications

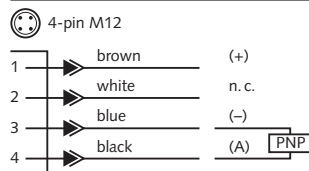
Circuit	Constant light trigger
Operating voltage	12 – 24 VDC
Current consumption	50 – 200 mA, depending on type
Mode of operation	dynamic/static ¹⁾
Sensitivity static/dynamic	adjustable by 270° pot
Output with LED	PNP
Function	normally open/closed
Load current	200 mA short-circuit proof
Pulse length	10 ms, internally adjustable (1 – 100 ms)
Frequency	max. 1 KHz, depending on pulse length
Temperature range	0°C – 60°C
EMC according to 2014/30/EU	EN 61000... CEE
System of protection	IP 65
General tolerance of the housing	DIN ISO 2768-m

¹⁾ internal switch for dynamic/static operating mode

Resolution

Light band B [mm]:	76	96	150
Part diameter [mm]:			
dynamic	1.0	1.0	1.5
static	1.0	1.5	2.0

Pin configuration



Article

Article	Order No.
Frame light barrier:	
PRI-70-76/4-P	8300-00000-4002
PRI-100-96/4-P	8301-00000-4002
PRI-150-150/4-P	8302-00000-4002

Also available w/o tie-bar (7 mm)

Accessories (more accessories, see last pages)

Article	Order No.
Protective frame:	
SR 70-76	2300-00000-0230
SR 100-96	2300-00000-0231
SR 150-150	2300-00000-0232
Connection cable:	
VK-M12-5-g (5 m, straight)	2112-00005-0500
VK-M12-5-w (5 m, angled)	2112-00005-1500
Extension cable 4-pin M12:	
VK-M12-g/M12 (2 m)	2112-00002-0404