

Torsion Proof Miniature Coupling

Type 2303A...

Double-flexible with Clamping Hub

Torsion proof miniature coupling for the installation of torque sensors with fixed housing or mounting support into the shaft assembly.

- High speed range
- Low weight, low moment of inertia
- High torsion resistance
- Free of wear and maintenance
- Non-corroding
- Antimagnetic

Description

Miniature couplings Type 2303A... are torsionally rigid, but angularly and axially flexible. The flexible discs or disc assemblies are connected alternately to both hubs and the center part by rivets.

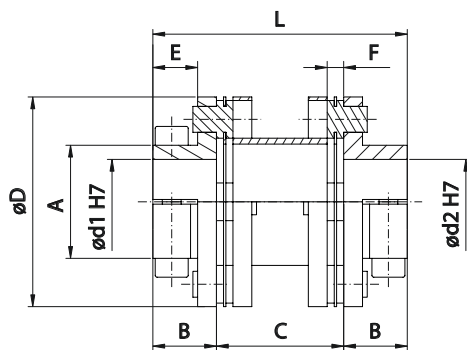
Axial, radial and angular misalignment of the shaft assembly can be applied in that way.

All supporting parts (hubs and center part) are made of light metal alloy. Miniature couplings Type 2303A... are therefore characterised by low weight, low moment of inertia and are non-corroding and antimagnetic.

If couplings are properly selected, duly assembled and used, the lifetime is nearly unlimited.



Dimensions



Application

Two double-flexible couplings provide compensation, when torque sensors with fixed housing must be installed.

Compensation of misalignment is always needed to avoid measurement error and damage to the sensor. Installation of sensors with fixed housing or mounting support requires double-flexible couplings on both sides of the sensor. Each coupling is mounted via clamping hubs on both halves.

Inside diameters ($\varnothing d1$ and $\varnothing d2$) of the clamping hubs can be configured individually. This allows integrating the torque sensor into nearly any application.

Type 2303A...		25	37	50	62	75
Nominal torque	T_{KN} N-m	0,39	1,56	6,17	24,7	36,2
$\varnothing D$	mm	25,4	35,8	44,5	57,4	64
Hole diameters $\varnothing d1/\varnothing d2$ (min. ... max.)	mm	3 ... 10	4 ... 14	6 ... 18	10 ... 24	12 ... 28
A	mm	13	19	24	30	34
B	mm	9	13,2	13,4	16,1	18
C	mm	16	21,6	27,2	33,8	35
E	mm	6,6	10	9,4	11,1	13
F	mm	2,2	2,7	3,6	4,4	5
L	mm	34	48	54	66	71

Technical Data

Type 2303A...			25	37	50	62	75
Nominal torque	T_{KN}	N·m	0,39	1,56	6,17	24,7	36,2
Max. torque	T_{Kmax}	N·m	0,54	2,19	8,64	34,6	50,7
Permitted axial offset	ΔK_a	mm	0,8	0,8	0,8	0,8	0,8
Permitted radial offset	ΔK_r	mm	0,7	0,7	0,7	0,7	0,7
Permitted angular offset (1 package)	ΔK_w	°	2	1,5	1	0,7	0,7
Rotary spring rate x 10 ⁻⁶	C_{Tdyn}	N·m/rad	1,945	12,993	19,884	51,786	80,88
Max.speed	n_{max}	rpm	64 000	44 000	36 000	28 000	24 000
Moment of inertia ¹⁾	J	10 ⁻⁶ ·kg·cm ²	2,33	14,01	37,99	104,28	203,55
Mass ¹⁾	m	kg	0,028	0,077	0,133	0,26	0,355
Hole diameters $\varnothing d1/\varnothing d2$ (min. ... max.) ²⁾		mm	3 ... 10	4 ... 14	6 ... 18	10 ... 24	12 ... 28

¹⁾ Moment of inertia and mass relative to hubs with maximum hole size.

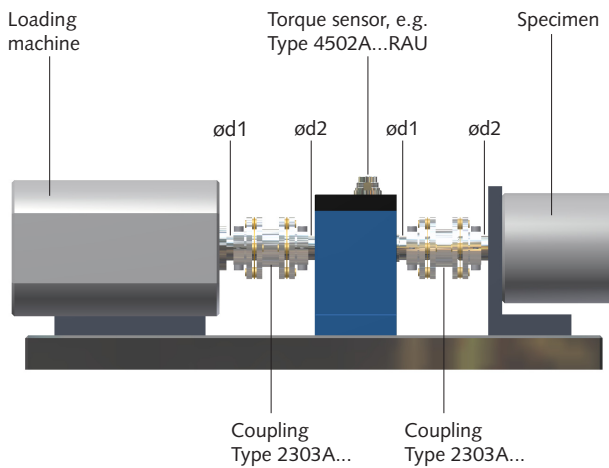
²⁾ Please specify desired hole diameters with order.

Maximum misalignment values of ΔK_a , ΔK_r , und ΔK_w can be utilized at the same time.

Included Accessories

- All necessary bolts for coupling assembly are included

Example of Application



Ordering Key

Type 2303A sp

Coupling Size

Nominal torque 0,39 N·m	25
Nominal torque 1,56 N·m	37
Nominal torque 6,17 N·m	50
Nominal torque 24,7 N·m	62
Nominal torque 36,2 N·m	75

Please specify desired hole diameters $\varnothing d1$ and $\varnothing d2$ with order (additional plaintext). Take notice of min. and max. diameters (see dimensions table).

Ordering Example:

Torsion proof miniature coupling, size 37.

Hole diameters $\varnothing d1 = 10$ mm, $\varnothing d2 = 12$ mm.

Type 2303A37sp